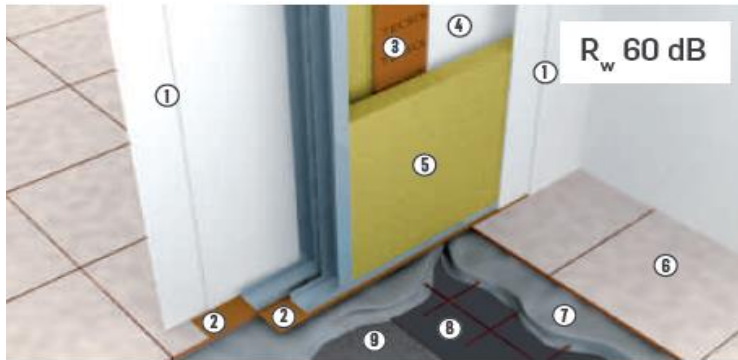
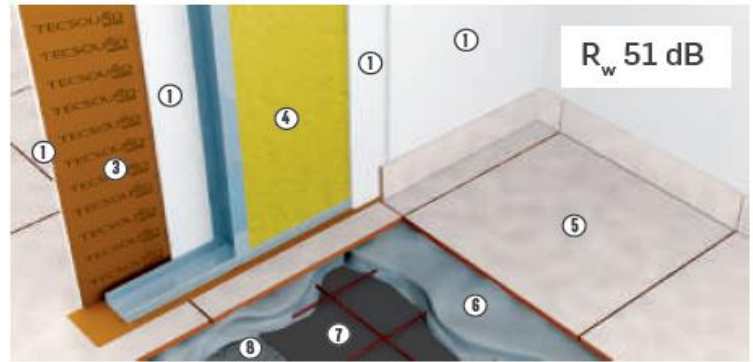


INTERIOR PARTITIONS

Gypsum plasterboard support

- | | |
|---|----------------------------|
| ① 13 mm gypsum plasterboard | ⑤ Flooring |
| ② TECSOUND® BAND 50 | ⑥ Reinforced mortar screed |
| ③ TECSOUND® SY 70 | ⑦ TEXSIMPACT 5 mm |
| ④ Mineral wool
(thickness: 50 mm; density: 15kg/m ³) | ⑧ Support |



**VERTICAL PARTITIONS
AND PARTITION WALLS**

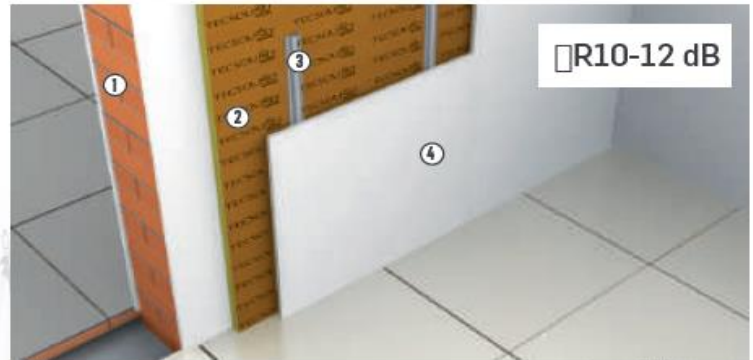
Gypsum plasterboard support

- | | |
|-----------------------------|---|
| ① 13 mm gypsum plasterboard | ⑤ Mineral wool
(thickness: 40 mm; density: 30kg/m ³) |
| ② TECSOUND® BAND 50 | ⑥ Flooring |
| ③ TECSOUND® SY 70 | ⑦ Reinforced mortar screed |
| ④ 13 mm gypsum plasterboard | ⑧ TEXSIMPACT 5 mm |
| | ⑨ Support |

**PARTITION WALLS
AND REFURBISHMENT**

Ceramic brick support

- | | |
|---------------------------|-----------------|
| ① Existing partition wall | ③ Omega profile |
| ② TECSOUND® FT | ④ Plasterboard |



PARTITIONS WALLS

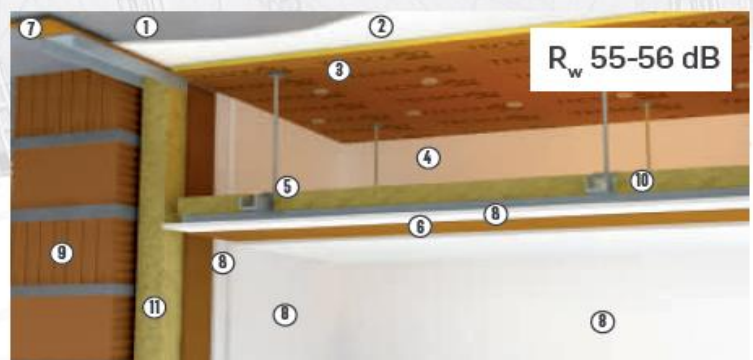
Ceramic brick support

- | | |
|------------------------------------|----------------------------|
| ① Plaster coat (thickness: 1,5 cm) | ⑤ Reinforced mortar screed |
| ② Brick wall (thickness: 7 cm) | ⑥ TEXSIMPACT 5 mm |
| ③ TECSOUND® 2FT | ⑦ Support |
| ④ Flooring | |

FACADES AND CEILINGS

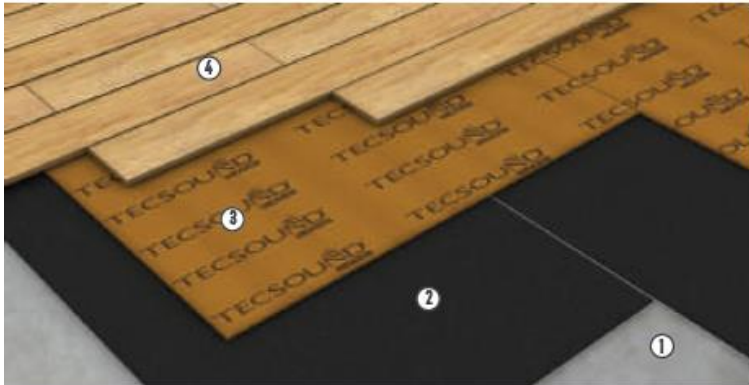
Gypsum plasterboard support

- | | |
|----------------------------------|---|
| ① Support | ⑦ TECSOUND® BAND 50 |
| ② Plaster coat | ⑧ 13 mm gypsum plasterboard |
| ③ TECSOUND® FT 75 | ⑨ Brick wall (thickness: 13 cm) |
| ④ Air cavity (thickness: 200 mm) | ⑩ Mineral wool
(thickness: 50 mm; density: 70kg/m ³) |
| ⑤ Dampers | ⑪ Mineral wool
(thickness: 50 mm; density: 40kg/m ³) |
| ⑥ TECSOUND® SY 70 | |

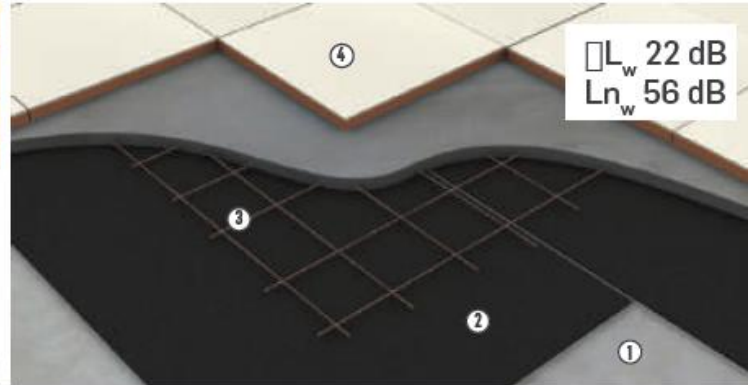


SOLUTIONS FOR FLOORS

Concrete support

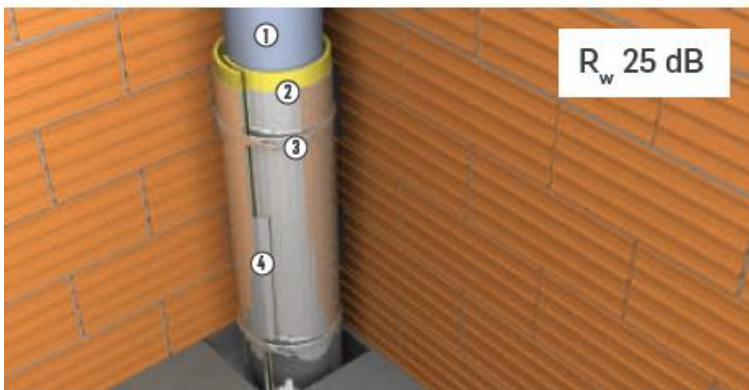


- ① Support
- ② TEXFON
- ③ TECSOUND® 70
- ④ Parquet



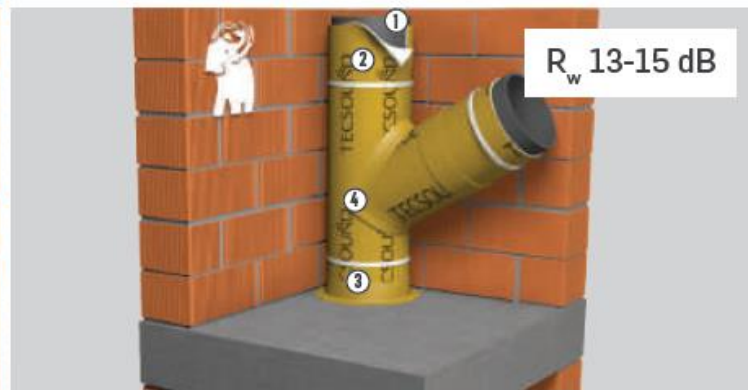
- ① Support
- ② TEXFON
- ③ Reinforced mortar screed
- ④ Parquet

SOLUTIONS FOR DRAINPIPES AND VENTS



$R_w 25 \text{ dB}$

- ① Drainpipe
- ② TECSOUND® FT 55 AL
- ③ Plastic flange
- ④ Aluminium tape



$R_w 13-15 \text{ dB}$

- ① Drainpipe
- ② TECSOUND® TUBE
- ③ Plastic flange
- ④ TECSOUND® S50 BAND 50



The acoustic insulation level obtained will always depend on the building system employed. For this reason, a few building solutions are presented in this brochure with TECSOUND® products of different types and using different applications, with the corresponding airborne noise insulation index R_w (dB) or impact noise insulation index ΔL_w (dB).

